

# Effectiveness of Breast Cancer Screening: Systematic Review and Meta-analysis to Update the 2009 U.S. Preventive Services Task Force Recommendation

Heidi D. Nelson, MD, MPH; Rochelle Fu, PhD; Amy Cantor, MD, MPH; Miranda Pappas, MA; Monica Daeges, BA; and Linda Humphrey, MD, MPH

**Background:** In 2009, the U.S. Preventive Services Task Force recommended biennial mammography screening for women aged 50 to 74 years and selective screening for those aged 40 to 49 years.

**Purpose:** To review studies of the effectiveness of breast cancer screening in average-risk women.

**Data Sources:** MEDLINE and Cochrane databases to 4 June 2015.

**Study Selection:** English-language randomized, controlled trials and observational studies of screening with mammography, magnetic resonance imaging, and ultrasonography that reported breast cancer mortality, all-cause mortality, or advanced breast cancer outcomes.

**Data Extraction:** Investigators extracted and confirmed data and dual rated study quality; discrepancies were resolved through consensus.

**Data Synthesis:** Fair-quality evidence from a meta-analysis of mammography trials indicated relative risks (RRs) for breast cancer mortality of 0.92 for women aged 39 to 49 years (95% CI, 0.75 to 1.02) (9 trials; 3 deaths prevented per 10 000 women over 10 years); 0.86 for those aged 50 to 59 years (CI, 0.68 to 0.97) (7 trials; 8 deaths prevented per 10 000 women over 10 years); 0.67 for those aged 60 to 69 years (CI, 0.54 to 0.83) (5 trials; 21 deaths prevented per 10 000 women over 10 years);

and 0.80 for those aged 70 to 74 years (CI, 0.51 to 1.28) (3 trials; 13 deaths prevented per 10 000 women over 10 years). Risk reduction was 25% to 31% for women aged 50 to 69 years in observational studies of mammography screening. All-cause mortality was not reduced with screening. Advanced breast cancer was reduced for women aged 50 years or older (RR, 0.62 [CI, 0.46 to 0.83]) (3 trials) but not those aged 39 to 49 years (RR, 0.98 [CI, 0.74 to 1.37]) (4 trials); less evidence supported this outcome.

**Limitations:** Most trials used imaging technologies and treatments that are now outdated, and definitions of advanced breast cancer were heterogeneous. Studies of effectiveness based on risk factors, intervals, or other modalities were unavailable or methodologically limited.

**Conclusion:** Breast cancer mortality is generally reduced with mammography screening, although estimates are not statistically significant at all ages and the magnitudes of effect are small. Advanced cancer is reduced with screening for women aged 50 years or older.

**Primary Funding Source:** Agency for Healthcare Research and Quality.

*Ann Intern Med.* 2016;164:244-255. doi:10.7326/M15-0969 [www.annals.org](http://www.annals.org)

For author affiliations, see end of text.

This article was published at [www.annals.org](http://www.annals.org) on 12 January 2016.

In 2009, the U.S. Preventive Services Task Force (USPSTF) recommended biennial mammography screening for women aged 50 to 74 years (1) on the basis of evidence of benefits and harms (2). The USPSTF concluded that screening decisions for women aged 40 to 49 years should be based on individual considerations, and that evidence was insufficient to assess benefits and harms for women aged 75 years or older (1).

Mammography screening in the United States is generally opportunistic, unlike many screening programs organized as public health services in other countries. Despite changes in practice guidelines and variation in clinical practices (3), overall screening rates in the United States have remained relatively stable for the past decade (4, 5). Data from the Healthcare Effectiveness Data and Information Set indicate that mam-

mography screening in 2014 in HMOs was performed for 74% of eligible women covered by commercial plans, 72% by Medicare, and 59% by Medicaid (6).

This systematic review updates evidence for the USPSTF on the effectiveness of mammography screening in reducing breast cancer mortality, all-cause mortality, and advanced breast cancer for women at average risk; and how effectiveness varies by age, risk factors, screening intervals, and imaging modalities. Systematic reviews of harms of screening (7), performance characteristics of screening methods (8), and accuracy of breast density determination and use of supplemental screening technologies (9) are provided in separate reports.

## METHODS

### Scope, Key Questions, and Analytic Framework

The USPSTF determined the scope and key questions for this review by using established methods (10, 11). A standard protocol was developed and publicly posted on the USPSTF Web site. A technical report fur-

#### See also:

Related articles . . . 205, 215, 226, 236, 256, 268, 279  
Editorial comment . . . . . 303

ther describes the methods and includes search strategies and additional information (7).

Investigators created an analytic framework outlining the key questions, patient populations, interventions, and outcomes reviewed (Appendix Figure 1, available at [www.annals.org](http://www.annals.org)). Key questions include the effectiveness of screening in reducing breast cancer mortality, all-cause mortality, and advanced breast cancer, and how effectiveness differs by age, risk factors, screening intervals, and modalities (mammography [film, digital, tomosynthesis], magnetic resonance imaging [MRI], and ultrasonography).

The target population for the USPSTF recommendation includes women aged 40 years or older, and excludes women with known physical signs or symptoms of breast abnormalities and those at high-risk for breast cancer whose surveillance and management are beyond the scope of the USPSTF's recommendations for prevention services (i.e., preexisting breast cancer or high-risk breast lesions, hereditary genetic syndromes associated with breast cancer, or previous large doses of chest radiation before age 30 years). Risk factors considered in this review are common among women who are not at high risk for breast cancer (12) (Appendix Figure 1, available at [www.annals.org](http://www.annals.org)).

### Data Sources and Searches

A research librarian conducted electronic database searches of the Cochrane Central Register of Controlled Trials, Cochrane Database of Systematic Reviews, and Ovid MEDLINE to 4 June 2015. Searches were supplemented by references identified from additional sources, including reference lists and experts. Additional unpublished data were provided by the investigators of the Canadian National Breast Screening Study (CNBSS) and Swedish Two-County Trial.

### Study Selection

Two investigators independently evaluated each study to determine inclusion eligibility on the basis of prespecified criteria. Discrepancies were resolved through consensus.

We included randomized, controlled trials (RCTs); observational studies of screening cohorts; and systematic reviews that compared outcomes of women exposed to screening versus not screening. For advanced cancer outcomes, studies that reported the incidence of late-stage disease among screened and unscreened populations were included, whereas those reporting comparisons of detection methods that did not capture a woman's longitudinal screening experience were not included (e.g., rates of screen-detected vs. non-screen-detected cancer).

Studies providing outcomes specific to age, risk factors, screening intervals, and modalities were preferred over studies providing general outcomes, when available. Studies most clinically relevant to practice in the United States were selected over studies that were less relevant. Relevance was determined by practice setting, population, date of publication, and use of technologies and therapies in current practice. Studies

meeting criteria for high quality and those with designs ranked higher in the study design-based hierarchy of evidence were emphasized because they are less susceptible to bias (e.g., RCTs over observational studies).

### Data Extraction and Quality Assessment

Details of the study design, patient population, setting, screening method, interventions, analysis, follow-up, and results were abstracted by one investigator and confirmed by a second. Two investigators independently applied criteria developed by the USPSTF (10, 11) to rate the quality of each study as good, fair, or poor for studies designed as RCTs, cohort studies, case-control studies, and systematic reviews; criteria to rate other study designs included in this review are not available. Discrepancies were resolved through consensus.

### Data Synthesis

We conducted several meta-analyses to determine more precise summary estimates when adequate data were reported by trials rated as fair- or good-quality. In each meta-analysis, the number of included trials was counted as the number of discrete data sources contributing to the summary estimate using their most recent results. To determine the appropriateness of meta-analysis, we considered clinical and methodological diversity and assessed statistical heterogeneity. All outcomes were binary (breast cancer mortality, all-cause mortality, and advanced cancer incidence defined by stage and tumor size). We used a random-effects model to combine relative risks (RRs) as the effect measure of the meta-analyses, while incorporating variation among studies. A profile-likelihood model was used to combine studies in the primary analyses (13). We assessed the presence of statistical heterogeneity among the studies by using the standard Cochran chi-square test, and the magnitude of heterogeneity by using the  $I^2$  statistic (14).

To account for clinical heterogeneity and obtain clinically meaningful estimates, we stratified the analyses by age group whenever possible (39 to 49 years, 50 to 59 years, 60 to 69 years, 70 to 74 years, and  $\geq 50$  years). We obtained additional age-stratified data for the meta-analysis from the investigators of 3 trials (15, 16) (Tabár L. Personal communication).

For breast cancer mortality, we used 2 methods of including cases to help clarify discrepancies between estimates. The long case accrual method counts all breast cancer cases contributing to breast cancer deaths. In this method, the case accrual time is equivalent to or close to the follow-up time. The short case accrual method includes only deaths that occur among cases of breast cancer diagnosed during the screening intervention period, and in some trials, within an additional defined case accrual period. The longest follow-up times available for each trial were selected for inclusion in the initial meta-analyses, and sensitivity analyses were conducted by using results of short case accrual methods.

We calculated the absolute rate reduction for 100 000 woman-years of follow-up (i.e., 10 000 women

followed for 10 years) for each age group on the basis of the combined RR and the combined cancer rate of the control group. We estimated combined cancer rates for each age group for controls with a random effects Poisson model using data from the trials. All analyses were performed by using Stata/IC, version 13.1 (StataCorp).

We assessed the aggregate internal validity (quality) of the body of evidence for each key question as good, fair, or poor by using methods developed by the USPSTF that are based on the number, quality, and size of studies; consistency of results between studies; and directness of evidence (10, 11).

### Role of the Funding Source

This research was funded by the Agency for Healthcare Research and Quality (AHRQ) under a contract to support the work of the USPSTF. The investigators worked with USPSTF members and AHRQ staff to develop and refine the scope, analytic framework, and key questions; resolve issues during the project; and finalize the report. The AHRQ had no role in study selection, quality assessment, synthesis, or development of conclusions. The AHRQ provided project oversight; reviewed the draft report; and distributed the draft for peer review, including to representatives of professional societies and federal agencies. The AHRQ performed a final review of the manuscript to ensure that the analysis met methodological standards. The investigators are solely responsible for the content and the decision to submit the manuscript for publication.

## RESULTS

Of the 12 070 abstracts identified by electronic searches and other sources, 38 studies met inclusion criteria for key questions in this report, including 5 systematic reviews of 62 studies (Appendix Figure 2, available at [www.annals.org](http://www.annals.org)).

### RCTs of Screening

Eight main trials of mammography screening met criteria for fair quality: the Health Insurance Plan of Greater New York (HIP) trial (17); the CNBSS (Canadian National Breast Cancer Screening)-1 (18, 19) and CNBSS-2 (20, 21); the Age trial, performed in the United Kingdom (22); and 4 trials from Sweden, which were the Stockholm trial (23), Malmö Mammographic Screening Trial (referred to separately as "MMST I" and "MMST II") (24), Gothenburg trial (25), and Swedish Two-County Trial (referred to separately as "Östergötland" and "Kopparberg") (26). Updates of the CNBSSs, the Age trial, and Swedish Two-County Trial provided new data for this report (15, 16, 27). The Edinburgh trial (28) was not included because of important baseline differences between screening and control groups, suggesting inadequate randomization.

Trials included over 600 000 women and varied in their recruitment, randomization, screening protocols, control groups, and sizes (Appendix Table 1, available at [www.annals.org](http://www.annals.org)). Breast cancer mortality was the main outcome measure, and all trials evaluated differ-

ences between screening and control groups on an intention-to-screen basis. Other important characteristics are described in the technical report (7).

## Breast Cancer Mortality Outcomes

### Screening Trials

The Swedish Two-County Trial (Kopparberg and Östergötland [26]), Age trial (27), Gothenburg trial (25), and CNBSS-1 and CNBSS-2 (15) used long case accrual methods to report breast cancer mortality by age. The HIP trial (29), MMST I, MMST II, and Stockholm trials used only short case accrual (30) to report breast cancer mortality by age. Across all trials, the mean or median screening intervention time ranged from 3.5 to 14.6 years, case accrual time from 7.0 to 17.4 years, and follow-up time from 11.2 to 21.9 years.

For women aged 39 to 49 years, the combined RR for breast cancer mortality was 0.92 (95% CI, 0.75 to 1.02) (9 trials [15, 25-27, 29, 30]) (Figure 1). The combined RR for women aged 50 to 59 years was 0.86 (CI, 0.68 to 0.97) (7 trials [15, 25, 26, 29, 30]); for those aged 60 to 69 years, it was 0.67 (CI, 0.54 to 0.83) (5 trials [26, 29, 30]). Combining results for women aged 50 to 69 years indicated an RR of 0.78 (CI, 0.68 to 0.90). Only 3 Swedish trials (Östergötland, Kopparberg, and MMST I) provided outcomes for women aged 70 to 74 years, and the numbers of events in these trials were much lower than for other age groups (26). A meta-analysis indicated a combined RR of 0.80 (CI, 0.51 to 1.28) (3 trials [26]).

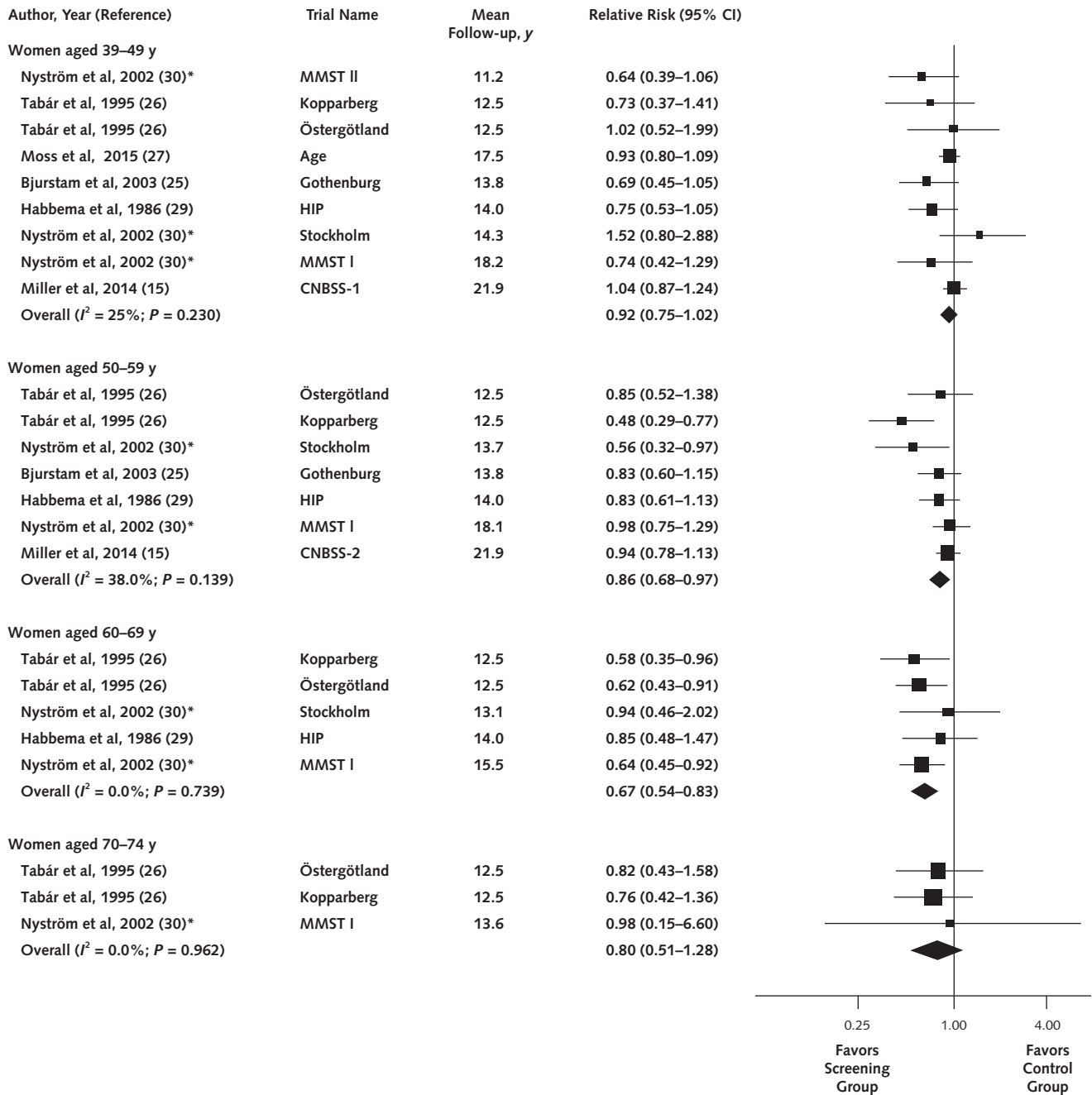
Results of the meta-analysis were used to determine absolute rates of breast cancer mortality reduction per 10 000 women screened for 10 years (Table 1). The number of deaths reduced (i.e., prevented) was 2.9 (CI, -0.6 to 8.9) for women aged 39 to 49 years; 7.7 (CI, 1.6 to 17.2) for those aged 50 to 59 years; 21.3 (CI, 10.7 to 31.7) for those aged 60 to 69 years; and 12.5 (CI, -17.2 to 32.1) for those aged 70 to 74 years. Absolute reduction for the combined group of women aged 50 to 69 years was 12.5 (CI, 5.9 to 19.5).

The effect of screening was diminished, although the statistical significance of the estimates did not change, in our sensitivity analysis that included results of a published combined analysis of the Swedish trials (MMST I, MMST II, Stockholm, Östergötland, Gothenburg, and Stockholm) using a long case accrual ("follow-up") method (30) rather than results of individual trials. In a separate sensitivity analysis, meta-analysis estimates from trials with short case accrual methods differed only slightly from those with long case accrual (Table 1). Across all trials with short case accrual, the mean or median screening intervention time ranged from 3.5 to 14.6 years, case accrual time from 5.0 to 15.5 years, and follow-up time from 10.7 to 25.7 years.

### Observational Studies

Three good-quality systematic reviews of observational studies of screening were recently conducted by the EUROSCREEN Working Group to assess the effectiveness of mammography screening on breast cancer mortality (31-33). An additional review included many

Figure 1. Effects of screening on breast cancer mortality.



Meta-analysis of trials using the longest follow-up times available. CNBSS = Canadian National Breast Screening Study; HIP = Health Insurance Plan of New York; MMST = Malmö Mammographic Screening Trial.  
 \* Used short case accrual.

of the same studies (34). The EUROSCREEN reviews included studies from current population-based screening programs in Europe and the United Kingdom; included women aged 50 to 69 years; and were designed as time-trend, incidence-based mortality, or case-control studies. Although quality criteria were not prespecified, the studies were subjected to critical review according to design-specific factors.

Of 12 time-trend studies reporting changes in breast cancer mortality in relation to the introduction of screening (32, 35–39, 40–46), 3 with adequate follow-up reported mortality reductions ranging from 28% to 35% (41, 42, 45). A meta-analysis (33) of incidence-based mortality studies estimating breast cancer mortality from a cohort of women not invited for screening, or from historical and current control

**Table 1.** Age-Specific Rates of Breast Cancer Mortality Reduction With Screening

Age	Mortality Rate in the Control Group per 100 000 Person-Years (95% CI)*	Breast Cancer Mortality Reduction: Relative Risk (95% CI)†	Deaths Prevented With Screening 10 000 Women Over 10 Years (95% CI)
<b>Long case accrual</b>			
39-49 y	36 (29 to 43)	0.92 (0.75 to 1.02)	2.9 (-0.6 to 8.9)
50-59 y	54 (50 to 58)	0.86 (0.68 to 0.97)	7.7 (1.6 to 17.2)
60-69 y	65 (52 to 81)	0.67 (0.54 to 0.83)	21.3 (10.7 to 31.7)
70-74 y	62 (48 to 80)	0.80 (0.51 to 1.28)	12.5 (-17.2 to 32.1)
50-69 y	58 (55 to 62)	0.78 (0.68 to 0.90)	12.5 (5.9 to 19.5)
<b>Short case accrual</b>			
39-49 y	22 (16 to 30)	0.87 (0.72 to 1.00)	2.9 (0.1 to 6.5)
50-59 y	31 (24 to 39)	0.86 (0.69 to 1.01)	4.5 (-0.2 to 9.8)
60-69 y	40 (28 to 56)	0.67 (0.55 to 0.91)	12.1 (3.4 to 20.7)
70-74 y	49 (36 to 64)	0.90 (0.46 to 1.78)	12.2 (-37.7 to 26.9)
50-69 y	32 (24 to 41)	0.81 (0.69 to 0.95)	6.1 (1.2 to 10.9)

\* On the basis of trials of screening included in the meta-analysis.

† From meta-analyses of screening trials using 2 different methods of case accrual. The long case accrual method counts all breast cancer cases contributing to breast cancer deaths. In this method, the case accrual time is equivalent to or close to the follow-up time. The short case accrual method includes only deaths that occur among cases of breast cancer diagnosed during the screening intervention period, and in some trials, within an additional defined case accrual period.

groups, indicated a risk reduction of 0.75 (CI, 0.69 to 0.81) (7 studies [42, 47-52]) for women invited to screening and 0.62 (CI, 0.56 to 0.69) (7 studies [42, 47-52]) for those actually screened. A meta-analysis of case-control studies (33) indicated an odds ratio of 0.69 (CI, 0.57 to 0.83) (7 studies [53-58]) for women invited to screening; and 0.52 (CI, 0.42 to 0.65) (7 studies [53-58]) for those actually screened.

Six additional studies were not included in the published systematic reviews because they were published in 2011 or later (59-63), included women in countries outside Europe and the United Kingdom (63, 64), or focused on ages older or younger than 50 to 69 years (59, 64) (Appendix Table 2, available at [www.annals.org](http://www.annals.org)). These studies are generally consistent with the EUROSCREEN results (61-63), including 2 observational studies of women in their 40s indicating a 26% to 44% reduction in breast cancer mortality for women invited to (59) or participating in screening (59, 63).

### All-Cause Mortality

All included trials of mammography screening reported all-cause mortality outcomes. However, not all trials reported them according to age, and the 2 Canadian trials reported combined estimates. For all ages, the combined RR of 0.99 (CI, 0.97 to 1.002) (9 trials [15, 27, 30, 65]) was consistent with no reduction in all-cause mortality with screening. Results were similar for each age group (RR, 0.99 [CI, 0.94 to 1.05] for women aged 39 to 49 years [7 trials], 1.02 [CI, 0.94 to 1.10] for those aged 50 to 59 years [3 trials], 0.97 [CI, 0.90 to 1.04] for those aged 60 to 69 years [2 trials], and 0.98 [CI, 0.86 to 1.14] for those aged 70 to 74 years [2 trials]) and when short case accrual methods were used.

### Mortality Outcomes by Risk Factors, Screening Intervals, and Modalities

No trials reported mortality outcomes for women with specific risk factors besides age, and none compared different screening intervals or modalities. Two observational studies indicated no differences in breast

cancer mortality after changing from annual to biennial screening (66) or between annual and triennial screening (67) (Appendix Table 2).

### Advanced Breast Cancer Outcomes Screening Trials

Trials measured cancer severity in terms of clinical stage (0 to IV) (23, 24, 68, 69), number of involved lymph nodes (0, 1 to 3, or  $\geq 4$ ) (18, 20, 25, 26, 70), and tumor size (mm) (19, 21, 26), and these varied across trials. Although "advanced" breast cancer is classified as metastatic disease (stage IV) by the American Joint Committee on Cancer TNM system based on tumor size, lymph node involvement, and presence of metastasis (71), most trials defined advanced breast cancer at much lower thresholds (72).

To combine results, the meta-analysis included the most severe disease categories available from the trials, recognizing that these definitions do not represent equivalent disease stages (Appendix Table 3, available at [www.annals.org](http://www.annals.org)). These include stage III and IV disease (i.e., regional and metastatic, respectively), size 40 to 50 mm or greater, or 4 or more positive lymph nodes. Combining results on the basis of these definitions indicated no difference with screening for women aged 39 to 49 years (RR, 0.98 [CI, 0.74 to 1.37]) (4 trials [19, 26, 68, 70]) but reduced risk for those aged 50 years or older (RR, 0.62 [CI, 0.46 to 0.83]) (3 trials [21, 26, 68]) (Figure 2).

### Observational Studies

Five case-series studies compared breast cancer diagnoses in populations of women who had previous screening versus none (73-77). However most studies used thresholds indicating early stages of disease (74, 77) or reported proportions rather than incidence rates (73-77), providing inadequate data to determine the effectiveness of screening (Appendix Table 4, available at [www.annals.org](http://www.annals.org)).

## Treatment-Related Morbidity Outcomes

### Screening Trials

A Cochrane review compared treatments between randomized groups in 5 screening trials: the CNBSS-1 and CNBSS-2, the MMST, and the Kopparberg and Stockholm trials (78). In this analysis, women randomly assigned to screening were more likely to have surgical therapy, analyzed as mastectomies and lumpectomies combined (RR, 1.35 [CI, 1.26 to 1.44]) (5 trials) or mastectomies alone (RR, 1.20 [CI, 1.11 to 1.30]) (5 trials) (78). These women were also more likely to have radiation therapy (RR, 1.32 [CI, 1.16 to 1.50]) (2 trials), and less likely to have hormone therapy (RR, 0.73 [CI, 0.55 to 0.96]) (2 trials). Use of chemotherapy was similar between groups (RR, 0.96 [CI, 0.78 to 1.19]) (2 trials) (78).

### Observational Studies

Four case-series studies compared breast cancer treatments in populations of women who had previous screening versus none (73-76) (Appendix Table 5, available at [www.annals.org](http://www.annals.org)). Although studies indicated less extensive surgery, such as fewer total mastectomies and more breast conservation therapies (73-76), and less chemotherapy (73, 74, 76) among screened women, the diagnosis of ductal carcinoma in situ was included in some studies (74, 76), resulting in less intensive therapies overall in screened women.

### Advanced Breast Cancer and Treatment-Related Morbidity Outcomes by Risk Factors, Screening Intervals, and Modalities

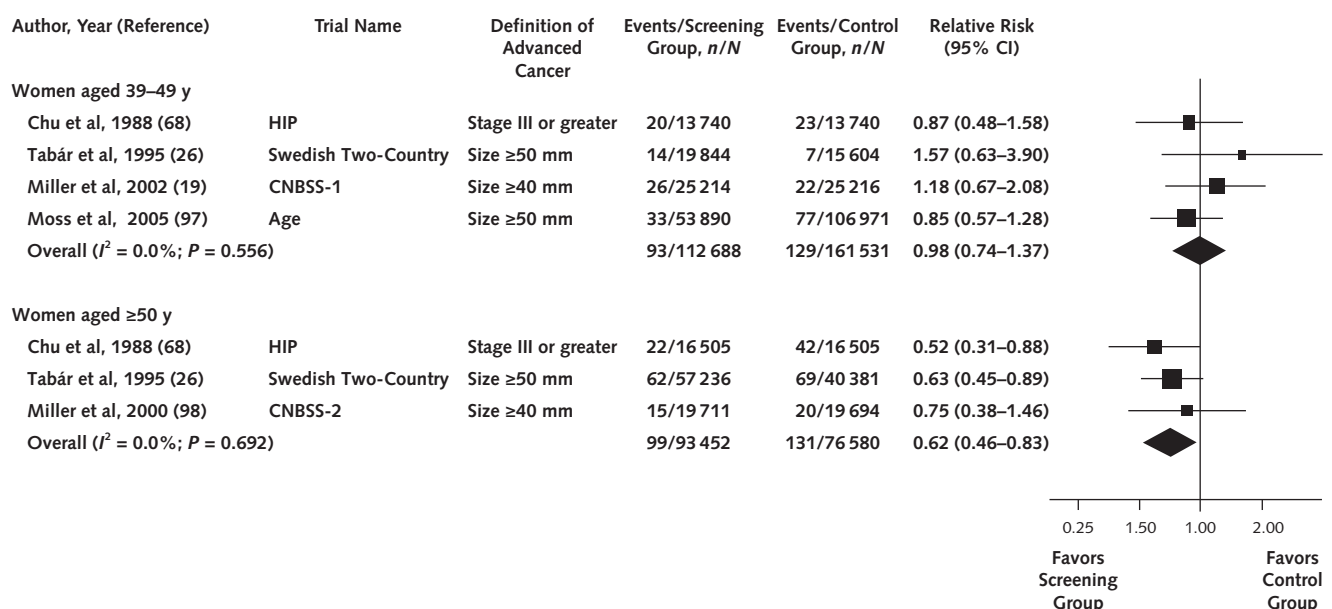
Five observational studies based on populations in the U.S. Breast Cancer Surveillance Consortium com-

pared breast cancer diagnoses by screening intervals (79-83) (Appendix Table 4). Some analyses indicated no differences between annual and biennial screening in detecting advanced stage disease (79, 80, 83), whereas 2 analyses indicated earlier stages of disease among women aged 40 to 49 years who were screened annually versus biennially (81, 82); this latter finding was confined to women with extreme breast density in one study (82). A randomized trial of annual versus triennial screening indicated detection of more tumors larger than 20 mm in size with triennial screening; however, this threshold indicates early rather than advanced disease (84). Two observational studies of women receiving mammography versus mammography and tomosynthesis indicated no differences in cancer size (85) or node status (85, 86) (Appendix Table 6, available at [www.annals.org](http://www.annals.org)).

## DISCUSSION

A summary of evidence is provided in Table 2. The effectiveness of mammography screening in reducing breast cancer mortality was evaluated by RCTs and observational studies providing fair-quality evidence. Our meta-analysis of 8 randomized trials indicates that breast cancer mortality is generally reduced with screening; however, estimates are not statistically significant for women aged 39 to 49 years and those aged 70 to 74 years, the magnitudes of effect are small, and results differ depending on how cases were accrued in trials. These results differ from our previous estimate (2) because they include updated data from the CNBSS-1 and CNBSS-2, the Swedish Two-County Trial, and the

Figure 2. Effects of screening on advanced cancer outcomes.



Meta-analysis of trials reporting the most severe disease categories available. CNBSS = Canadian National Breast Screening Study; HIP = Health Insurance Plan of New York.

**Table 2.** Summary of Evidence: Effectiveness of Breast Cancer Screening

Previous USPSTF Reviews	Studies in Update	Overall Quality	Limitations
<b>Effectiveness of screening in reducing breast cancer-specific and all-cause mortality: differences by age, risk factors, and screening intervals</b>			
Mammography screening reduced breast cancer mortality in RCTs for women aged 39-49 y (RR, 0.85 [95% CrI, 0.75-0.96]; 8 trials), those aged 50-59 y (RR, 0.86 [CrI, 0.75-0.99]; 6 trials), and those aged 60-69 y (0.68 [CrI, 0.54-0.87]; 2 trials); data were limited for women aged 70-74 y	3 RCTs provided updated data in addition to 5 previously published RCTs; 65 observational studies (57 included in 4 systematic reviews, plus 8 additional studies)	Fair	Trials have methodological limitations Observational studies used various methods that introduce potential bias
<b>Effectiveness of screening in reducing the incidence of advanced breast cancer and treatment-related morbidity: differences by age, risk factors, and screening intervals</b>			
Not included	5 RCTs of screening and cancer stage; 1 Cochrane review of 5 RCTs of treatment; 1 RCT of intervals; 14 observational studies	Poor (observational studies) to fair (RCTs)	Definitions of advanced breast cancer were heterogeneous Observational studies were not designed to determine effectiveness
<b>Effectiveness of screening in reducing breast cancer-specific and all-cause mortality by screening modality</b>			
Not included	No studies evaluated this question	NA	NA
<b>Effectiveness of screening in reducing the incidence of advanced breast cancer and treatment-related morbidity by screening modality</b>			
Not included	2 observational studies	Poor	No RCTs; comparability of groups not known

BCSC = Breast Cancer Surveillance Consortium; CBE = clinical breast examination; CrI = credible interval; NA = not applicable; RCT = randomized, controlled trial; RR = relative risk; USPSTF = U.S. Preventive Services Task Force.

Age trial and incorporate data by using the longest case accrual methods available from each trial.

Observational studies of population-based mammography screening, limited by inherent biases of non-randomized studies, reported a wide range of reductions in breast cancer mortality. Most studies were conducted in Europe or the United Kingdom and included women aged 50 to 69 years. Meta-analyses indicated a 25% reduction based on 7 incidence-based mortality studies and a 31% reduction based on 7 case-control studies. These results generally concur with our meta-analysis of trials for women aged 50 to 69 years that indicated a statistically significant 22% reduction.

Evidence of breast cancer mortality reduction in observational studies is inconsistent with randomized trials of women in their 40s. Two observational studies indicated 25% to 44% reductions with screening that differ from the non-statistically significant reduction from our meta-analysis of trials. This difference may re-

flect dissimilarities between participants and nonparticipants of screening programs in nonrandomized studies, as well as assumptions underlying mortality estimates.

All-cause mortality did not differ between randomized groups in meta-analyses of fair-quality trials, regardless of whether trials were analyzed in combined or separate age groups.

Questions about the effectiveness of screening in reducing breast cancer-specific or all-cause mortality on the basis of risk factors, screening intervals, and modalities remain largely unanswered by currently available research. No studies evaluated breast cancer-specific or all-cause mortality outcomes on the basis of risk factors besides age. Although there were no trials of the effectiveness of different screening intervals, 2 observational studies indicated no differences in breast cancer mortality after changing from annual to biennial screening or between annual and triennial screening.

Table 2—Continued

Consistency	Applicability	Summary of Findings
Results are consistent across types of studies	Most studies were conducted in Europe RCTs were based on technologies and treatments that have changed over time	Breast cancer mortality is generally reduced with mammography screening, although results of RCTs varied by age: 39–49 y (RR, 0.92 [95% CI, 0.75–1.02]; 9 trials), 50–59 y (RR, 0.86 [CI, 0.68–0.97]; 7 trials), and 60–69 y (RR, 0.67 [CI, 0.54–0.83]; 5 trials); data were limited for women aged 70–74 y Meta-analyses of observational studies indicated 25%–31% reduction in breast cancer mortality for women aged 50–69 y invited to screening Two observational studies of women in their 40s indicated 26%–44% reduction in breast cancer mortality All-cause mortality was not reduced with screening for any age Studies of risk factors and screening intervals were not available or were methodologically limited
Results are consistent across types of studies	Most trials were conducted in Europe RCTs were based on technologies and treatments that have changed over time	Mammography screening reduced cancer stage for women aged ≥50 y (RR, 0.62 [CI, 0.46–0.83]; 3 trials), but not for those aged 39–49 y Women randomly assigned to screening had more mastectomies, lumpectomies, and radiation therapy, and less hormone therapy, than controls Observational studies were inconclusive Studies of risk factors and screening intervals were not available or were methodologically limited
NA	NA	NA
Results are consistent	High clinical relevance	No differences in cancer size or node status between screening with mammography alone vs. mammography and tomosynthesis

The effectiveness of breast cancer screening in reducing advanced breast cancer outcomes is supported by less evidence than for mortality. Studies provided heterogeneous measures of breast cancer severity and generally reported early-stage disease. A meta-analysis of trials indicated a statistically significant reduction in advanced disease for women aged 50 years or older who were randomly assigned to undergo screening, but not for women aged 39 to 49 years. This reduction in advanced cancer aligns with reductions in mortality outcomes for women older than 50 years reported in randomized trials and observational studies, but differs from studies of population trends that show no reductions in advanced breast cancer after the introduction of mass screening (87–89).

In a meta-analysis of 5 trials, women randomly assigned to undergo screening were more likely to have surgical and radiation therapy and less likely to have hormone therapy than controls; use of chemotherapy was similar between groups. This finding would be expected, because screening increases detection of ductal

carcinoma in situ and early-stage disease that are currently aggressively treated. Observational studies of the impact of screening on diagnosis and treatment of advanced cancer were inadequately designed to determine effectiveness because they generally provided comparisons between screen-detected and non-screen-detected cases and between proportions of different cancer diagnoses for screened versus unscreened women. Comparisons of incidence rates between screening versus nonscreening populations would provide more appropriate measures.

The effectiveness of screening in reducing advanced breast cancer and treatment morbidity on the basis of risk factors, screening intervals, and modalities was also unanswered by current research. The analysis of outcomes based on screening intervals in the U.S. Breast Cancer Surveillance Consortium is limited by the opportunistic nature of screening in the United States. Women choosing short screening intervals probably differ in important ways from those choosing longer intervals. Consequently, comparisons between out-



comes of these 2 types of women may not provide valid measures of effectiveness. Only 2 observational studies compared imaging modalities and found no differences in cancer size or node status between women receiving mammography alone versus mammography and tomosynthesis.

Our review has limitations. First, we included only English-language articles; this could result in language bias, although we did not identify non-English-language studies that otherwise met inclusion criteria in our searches. Second, we only included studies that were applicable to current practice in the United States in order to improve clinical relevance for the USPSTF, excluding studies and limiting relevance to other populations and settings. Third, studies used heterogeneous definitions for advanced breast cancer that did not consider tumor subtypes, and most trials used imaging technologies and treatments that are now outdated, limiting their applicability. Finally, studies were not available for some key questions, specifically for effectiveness based on risk factors, intervals, or other modalities; and the number, quality, and applicability of studies varied widely.

Additional research on the effectiveness of mammography screening with quality-of-life outcomes, as well as morbidity and mortality outcomes, and using current imaging technology and breast cancer treatments would provide further understanding of the implications of routine screening. Data for specific groups of women, particularly older women, or groups based on racial and ethnic background, access to screening, or existence of comorbidities, for example, could further inform screening practices. New technologies, such as tomosynthesis, are becoming more widely used in the United States without definitive studies of their effects on screening outcomes. Studies on the role of additional imaging modalities in screening are required in order to appropriately incorporate these technologies in the screening process.

In conclusion, breast cancer mortality is generally reduced with mammography screening, although estimates are not statistically significant at all ages and the magnitudes of effect are small. Advanced cancer is reduced with screening for women aged 50 years or older.

From the Pacific Northwest Evidence-based Practice Center, Oregon Health & Science University; Veterans Affairs Portland Health Care System; and Providence Cancer Center, Providence Health & Services, Portland, Oregon.

**Disclaimer:** The findings and conclusions in this article are those of the authors, who are responsible for its content, and do not necessarily represent the views of AHRQ. No statement in this report should be construed as an official position of AHRQ or the U.S. Department of Health and Human Services.

**Acknowledgment:** The authors thank Andrew Hamilton, MLS, MS, for conducting literature searches and Spencer Dandy, BS, for assisting with manuscript preparation at the Pacific Northwest Evidence-based Practice Center at Oregon Health

& Science University; and Alison Conlin, MD, MPH, and Michael Neuman, MD, at the Providence Cancer Center at Providence Health and Services Oregon, and Arpana Naik, MD, at Oregon Health & Science University for providing medical expertise. They also thank Jennifer Crowell, MD, MPH, at the Agency for Healthcare Research and Quality, and U.S. Preventive Services Task Force members Linda Baumann, PhD, RN; Kirsten Bibbins-Domingo, PhD, MD, MAS; Mark Ebell, MD, MS; Jessica Herzstein, MD, MPH; Michael LeFevre, MD, MSPH; and Douglas Owens, MD, MS.

**Grant Support:** By the AHRQ (contract 290-2012-00015-I, Task Order 2), Rockville, Maryland.

**Disclosures:** Drs. Nelson, Fu, Cantor, and Humphrey; Ms. Pappas; and Ms. Daeges report grants from AHRQ during the conduct of the study. Authors not named here have disclosed no conflicts of interest. Disclosures can also be viewed at [www.acponline.org/authors/icmje/ConflictOfInterestForms.do?msNum=M15-0969](http://www.acponline.org/authors/icmje/ConflictOfInterestForms.do?msNum=M15-0969).

**Requests for Single Reprints:** Heidi D. Nelson, MD, MPH, Oregon Health & Science University, 3181 SW Sam Jackson Park Road, Mail Code BICC, Portland, OR 97239; e-mail, [nelsonh@ohsu.edu](mailto:nelsonh@ohsu.edu).

Current author addresses and author contributions are available at [www.annals.org](http://www.annals.org).

## References

1. U.S. Preventive Services Task Force. Screening for breast cancer: U.S. Preventive Services Task Force recommendation statement. *Ann Intern Med.* 2009;151:716-26. [PMID: 19920272] doi:10.7326/0003-4819-151-10-200911170-00008
2. Nelson HD, Tyne K, Naik A, Bougatsos C, Chan BK, Humphrey L; U.S. Preventive Services Task Force. Screening for breast cancer: an update for the U.S. Preventive Services Task Force. *Ann Intern Med.* 2009;151:727-37. [PMID: 19920273] doi:10.7326/0003-4819-151-10-200911170-00009
3. Nelson HD, Weerasinghe R, Wang L, Grunkemeier G. Mammography screening in a large health system following the U.S. Preventive Services Task Force Recommendations and the Affordable Care Act. *PLoS One.* 2015;10:e0131903. [PMID: 26121485] doi: 10.1371/journal.pone.0131903.
4. National Center for Health Statistics. Tables 83 (page 1 of 3). Use of mammography among women aged 40 and over, by selected characteristics: United States, selected years 1987-2010. Accessed at [www.cdc.gov/nchs/data/hus/2013/083.pdf](http://www.cdc.gov/nchs/data/hus/2013/083.pdf) on November 23, 2015.
5. Block LD, Jarlenski MP, Wu AW, Bennett WL. Mammography use among women ages 40-49 after the 2009 U.S. Preventive Services Task Force recommendation. *J Gen Intern Med.* 2013;28:1447-53. [PMID: 23674077] doi:10.1007/s11606-013-2482-5
6. National Committee for Quality Assurance. State of Health Care Quality: Breast Cancer Screening. Accessed at [www.ncqa.org/ReportCards/HealthPlans/StateofHealthCareQuality/2015TableofContents/BreastCancer.aspx](http://www.ncqa.org/ReportCards/HealthPlans/StateofHealthCareQuality/2015TableofContents/BreastCancer.aspx) on November 23, 2015.
7. Nelson HD, Cantor A, Humphrey L, Fu R, Pappas M, Daeges M, et al. Screening for Breast Cancer: A Systematic Review to Update the 2009 U.S. Preventive Services Task Force Recommendation. Evidence Synthesis No. 124. AHRQ Publication No. 14-05201-EF-1. Rockville, MD: Agency for Healthcare Research and Quality; 2015. Accessed at [www.uspreventiveservicestaskforce.org/Page/Document/draft-evidence-review-screening-for-breast-cancer/breast-cancer-screening1](http://www.uspreventiveservicestaskforce.org/Page/Document/draft-evidence-review-screening-for-breast-cancer/breast-cancer-screening1) on 22 April 2014.

8. Melnikow J, Fenton JJ, Miglioretti D, Whitlock E, Weyrich M. Screening for Breast Cancer With Digital Breast Tomosynthesis. Evidence Synthesis No. 125. AHRQ Publication No. 14-05201-EF-2. Rockville, MD: Agency for Healthcare Research and Quality; 2015.
9. Melnikow J, Fenton JJ, Whitlock E, Miglioretti D, Weyrich M, Thompson J, et al. Adjunctive Screening for Breast Cancer in Women With Dense Breasts: A Systematic Review for the U.S. Preventive Services Task Force. Evidence Synthesis No. 126. AHRQ Publication No. 14-05201-EF-2. Rockville, MD: Agency for Healthcare Research and Quality; 2015.
10. Harris RP, Helfand M, Woolf SH, Lohr KN, Mulrow CD, Teutsch SM, et al; Methods Work Group, Third US Preventive Services Task Force. Current methods of the US Preventive Services Task Force: a review of the process. *Am J Prev Med.* 2001;20:21-35. [PMID: 11306229]
11. U.S. Preventive Services Task Force. Procedure Manual. Rockville, MD: Agency for Healthcare Research and Quality; 2011.
12. Nelson HD, Zakher B, Cantor A, Fu R, Griffin J, O'Meara ES, et al. Risk factors for breast cancer for women aged 40 to 49 years: a systematic review and meta-analysis. *Ann Intern Med.* 2012;156:635-48. [PMID: 22547473] doi:10.7326/0003-4819-156-9-20120510-00006
13. Hardy RJ, Thompson SG. A likelihood approach to meta-analysis with random effects. *Stat Med.* 1996;15:619-29. [PMID: 8731004]
14. Higgins JP, Thompson SG, Deeks JJ, Altman DG. Measuring inconsistency in meta-analyses. *BMJ.* 2003;327:557-60. [PMID: 12958120]
15. Miller AB, Wall C, Baines CJ, Sun P, To T, Narod SA. Twenty five year follow-up for breast cancer incidence and mortality of the Canadian National Breast Screening Study: randomised screening trial. *BMJ.* 2014;348:g366. [PMID: 24519768] doi:10.1136/bmj.g366
16. Tabár L, Vitak B, Chen TH, Yen AM, Cohen A, Tot T, et al. Swedish two-county trial: impact of mammographic screening on breast cancer mortality during 3 decades. *Radiology.* 2011;260:658-63. [PMID: 21712474] doi:10.1148/radiol.11110469
17. Shapiro S, Venet W, Strax P, Venet L, Roeser R. Ten- to fourteen-year effect of screening on breast cancer mortality. *J Natl Cancer Inst.* 1982;69:349-55. [PMID: 6955542]
18. Miller AB, Baines CJ, To T, Wall C. Canadian National Breast Screening Study: 1. Breast cancer detection and death rates among women aged 40 to 49 years. *CMAJ.* 1992;147:1459-76. [PMID: 1423087]
19. Miller AB, To T, Baines CJ, Wall C. The Canadian National Breast Screening Study-1: breast cancer mortality after 11 to 16 years of follow-up. A randomized screening trial of mammography in women age 40 to 49 years. *Ann Intern Med.* 2002;137:305-12. [PMID: 12204013]
20. Miller AB, Baines CJ, To T, Wall C. Canadian National Breast Screening Study: 2. Breast cancer detection and death rates among women aged 50 to 59 years. *CMAJ.* 1992;147:1477-88. [PMID: 1423088]
21. Miller AB, To T, Baines CJ, Wall C. Canadian National Breast Screening Study-2: 13-year results of a randomized trial in women aged 50-59 years. *J Natl Cancer Inst.* 2000;92:1490-9. [PMID: 10995804]
22. Moss SM, Cuckle H, Evans A, Johns L, Waller M, Bobrow L; Trial Management Group. Effect of mammographic screening from age 40 years on breast cancer mortality at 10 years' follow-up: a randomised controlled trial. *Lancet.* 2006;368:2053-60. [PMID: 17161727]
23. Frisell J, Lidbrink E, Hellström L, Rutqvist LE. Followup after 11 years—update of mortality results in the Stockholm mammographic screening trial. *Breast Cancer Res Treat.* 1997;45:263-70. [PMID: 9386870]
24. Andersson I, Aspegren K, Janzon L, Landberg T, Lindholm K, Linell F, et al. Mammographic screening and mortality from breast cancer: the Malmö mammographic screening trial. *BMJ.* 1988;297:943-8. [PMID: 3142562]
25. Bjurstam N, Björneld L, Warwick J, Sala E, Duffy SW, Nyström L, et al. The Gothenburg Breast Screening Trial. *Cancer.* 2003;97:2387-96. [PMID: 12733136]
26. Tabar L, Fagerberg G, Chen HH, Duffy SW, Smart CR, Gad A, et al. Efficacy of breast cancer screening by age. New results from the Swedish Two-County Trial. *Cancer.* 1995;75:2507-17. [PMID: 7736395]
27. Moss SM, Wale C, Smith R, Evans A, Cuckle H, Duffy SW. Effect of mammographic screening from age 40 years on breast cancer mortality in the UK Age trial at 17 years' follow-up: a randomised controlled trial. *Lancet Oncol.* 2015;16:1123-32. [PMID: 26206144] doi:10.1016/S1470-2045(15)00128-X.
28. Alexander FE, Anderson TJ, Brown HK, Forrest AP, Hepburn W, Kirkpatrick AE, et al. 14 years of follow-up from the Edinburgh randomised trial of breast-cancer screening. *Lancet.* 1999;353:1903-8. [PMID: 10371567]
29. Habbema JD, van Oortmarssen GJ, van Putten DJ, Lubbe JT, van der Maas PJ. Age-specific reduction in breast cancer mortality by screening: an analysis of the results of the Health Insurance Plan of Greater New York study. *J Natl Cancer Inst.* 1986;77:317-20. [PMID: 3461193]
30. Nyström L, Andersson I, Bjurstam N, Frisell J, Nordenskjöld B, Rutqvist LE. Long-term effects of mammography screening: updated overview of the Swedish randomised trials. *Lancet.* 2002;359:909-19. [PMID: 11918907]
31. Njor S, Nyström L, Moss S, Paci E, Broeders M, Segnan N, et al; Euroscreen Working Group. Breast cancer mortality in mammographic screening in Europe: a review of incidence-based mortality studies. *J Med Screen.* 2012;19 Suppl 1:33-41. [PMID: 22972809]
32. Moss SM, Nyström L, Jonsson H, Paci E, Lyng E, Njor S, et al; Euroscreen Working Group. The impact of mammographic screening on breast cancer mortality in Europe: a review of trend studies. *J Med Screen.* 2012;19 Suppl 1:26-32. [PMID: 22972808]
33. Broeders M, Moss S, Nyström L, Njor S, Jonsson H, Paap E, et al; EUROSCREEN Working Group. The impact of mammographic screening on breast cancer mortality in Europe: a review of observational studies. *J Med Screen.* 2012;19 Suppl 1:14-25. [PMID: 22972807]
34. Harris R, Yeatts J, Kinsinger L. Breast cancer screening for women ages 50 to 69 years a systematic review of observational evidence. *Prev Med.* 2011;53:108-14. [PMID: 21820465] doi:10.1016/j.ypmed.2011.07.004
35. Jørgensen KJ, Zahl PH, Gøtzsche PC. Breast cancer mortality in organised mammography screening in Denmark: comparative study. *BMJ.* 2010;340:c1241. [PMID: 20332505] doi:10.1136/bmj.c1241
36. Otto SJ, Fracheboud J, Looman CW, Broeders MJ, Boer R, Hendriks JH, et al; National Evaluation Team for Breast Cancer Screening. Initiation of population-based mammography screening in Dutch municipalities and effect on breast-cancer mortality: a systematic review. *Lancet.* 2003;361:1411-7. [PMID: 12727393]
37. Otten JD, Broeders MJ, Fracheboud J, Otto SJ, de Koning HJ, Verbeek AL. Impressive time-related influence of the Dutch screening programme on breast cancer incidence and mortality, 1975-2006. *Int J Cancer.* 2008;123:1929-34. [PMID: 18688863] doi:10.1002/ijc.23736
38. Pons-Vigués M, Puigpinós R, Cano-Serral G, Mari-Dell'Olmo M, Borrell C. Breast cancer mortality in Barcelona following implementation of a city breast cancer-screening program. *Cancer Detect Prev.* 2008;32:162-7. [PMID: 18639990] doi:10.1016/j.cdp.2008.05.002
39. Cabanes A, Vidal E, Pérez-Gómez B, Aragonés N, López-Abente G, Pollán M. Age-specific breast, uterine and ovarian cancer mortality trends in Spain: changes from 1980 to 2006. *Cancer Epidemiol.* 2009;33:169-75. [PMID: 19766076] doi:10.1016/j.canep.2009.08.010
40. Barchielli A, Paci E. Trends in breast cancer mortality, incidence, and survival, and mammographic screening in Tuscany, Italy. *Cancer Causes Control.* 2001;12:249-55. [PMID: 11405330]
41. Gorini G, Zappa M, Miccinesi G, Paci E, Costantini AS. Breast cancer mortality trends in two areas of the province of Florence, Italy,

- where screening programmes started in the 1970s and 1990s. *Br J Cancer*. 2004;90:1780-3. [PMID: 15150601]
42. Asuncion EN, Moreno-Iribas C, Barcos Urriaga A, Ardanaz E, Ederra Sanz M, Castilla J, et al. Changes in breast cancer mortality in Navarre (Spain) after introduction of a screening programme. *J Med Screen*. 2007;14:14-20. [PMID: 17362566]
43. Haukka J, Byrnes G, Boniol M, Autier P. Trends in breast cancer mortality in Sweden before and after implementation of mammography screening. *PLoS One*. 2011;6:e22422. [PMID: 21966354] doi:10.1371/journal.pone.0022422
44. Blanks RG, Moss SM, McGahan CE, Quinn MJ, Babb PJ. Effect of NHS breast screening programme on mortality from breast cancer in England and Wales, 1990-8: comparison of observed with predicted mortality. *BMJ*. 2000;321:665-9. [PMID: 10987769]
45. Duffy SW, Tabar L, Olsen AH, Vitak B, Allgood PC, Chen TH, et al. Absolute numbers of lives saved and overdiagnosis in breast cancer screening, from a randomized trial and from the Breast Screening Programme in England. *J Med Screen*. 2010;17:25-30. [PMID: 20356942] doi:10.1258/jms.2009.009094
46. Autier P, Boniol M, Gavin A, Vatten LJ. Breast cancer mortality in neighbouring European countries with different levels of screening but similar access to treatment: trend analysis of WHO mortality database. *BMJ*. 2011;343:d4411. [PMID: 21798968] doi:10.1136/bmj.d4411
47. Hakama M, Pukkala E, Heikkilä M, Kallio M. Effectiveness of the public health policy for breast cancer screening in Finland: population based cohort study. *BMJ*. 1997;314:864-7. [PMID: 9093096]
48. Olsen AH, Njor SH, Vejborg I, Schwartz W, Dalgaard P, Jensen MB, et al. Breast cancer mortality in Copenhagen after introduction of mammography screening: cohort study. *BMJ*. 2005;330:220. [PMID: 15649904]
49. Sarkeala T, Heinävaara S, Anttila A. Breast cancer mortality with varying invitational policies in organised mammography. *Br J Cancer*. 2008;98:641-5. [PMID: 18231108] doi:10.1038/sj.bjc.6604203
50. Paci E, Giorgi D, Bianchi S, Vezzosi V, Zappa M, Crocetti E, et al. Assessment of the early impact of the population-based breast cancer screening programme in Florence (Italy) using mortality and surrogate measures. *Eur J Cancer*. 2002;38:568-73. [PMID: 11872351]
51. Kalager M, Zelen M, Langmark F, Adami HO. Effect of screening mammography on breast-cancer mortality in Norway. *N Engl J Med*. 2010;363:1203-10. [PMID: 20860502] doi:10.1056/NEJMoa1000727
52. Swedish Organised Service Screening Evaluation Group. Reduction in breast cancer mortality from organized service screening with mammography: 1. Further confirmation with extended data. *Cancer Epidemiol Biomarkers Prev*. 2006;15:45-51. [PMID: 16434585]
53. Gabe R, Tryggvadóttir L, Sigfússon BF, Olafsdóttir GH, Sigurdsson K, Duffy SW. A case-control study to estimate the impact of the Icelandic population-based mammography screening program on breast cancer death. *Acta Radiol*. 2007;48:948-55. [PMID: 18080359]
54. Puliti D, Miccinesi G, Collina N, De Lisi V, Federico M, Ferretti S, et al; IMPACT Working Group. Effectiveness of service screening: a case-control study to assess breast cancer mortality reduction. *Br J Cancer*. 2008;99:423-7. [PMID: 18665188] doi:10.1038/sj.bjc.6604532
55. Otto SJ, Fracheboud J, Verbeek AL, Boer R, Reijerink-Verheij JC, Otten JD, et al; National Evaluation Team for Breast Cancer Screening. Mammography screening and risk of breast cancer death: a population-based case-control study. *Cancer Epidemiol Biomarkers Prev*. 2012;21:66-73. [PMID: 22147362] doi:10.1158/1055-9965.EPI-11-0476
56. van Schoor G, Moss SM, Otten JD, Donders R, Paap E, den Heeten GJ, et al. Increasingly strong reduction in breast cancer mortality due to screening. *Br J Cancer*. 2011;104:910-4. [PMID: 21343930] doi:10.1038/bjc.2011.44
57. Allgood PC, Warwick J, Warren RM, Day NE, Duffy SW. A case-control study of the impact of the East Anglian breast screening programme on breast cancer mortality. *Br J Cancer*. 2008;98:206-9. [PMID: 18059396]
58. Fielder HM, Warwick J, Brook D, Gower-Thomas K, Cuzick J, Monypenny I, et al. A case-control study to estimate the impact on breast cancer death of the breast screening programme in Wales. *J Med Screen*. 2004;11:194-8. [PMID: 15563774]
59. Hellquist BN, Duffy SW, Abdsaleh S, Björnelund L, Bordás P, Tabár L, et al. Effectiveness of population-based service screening with mammography for women ages 40 to 49 years: evaluation of the Swedish Mammography Screening in Young Women (SCRY) cohort. *Cancer*. 2011;117:714-22. [PMID: 20882563] doi:10.1002/cncr.25650
60. Hofvind S, Skaane P. Stage distribution of breast cancer diagnosed before and after implementation of population-based mammographic screening. *Rofo*. 2012;184:437-42. [PMID: 22426937] doi:10.1055/s-0031-1299352
61. Hofvind S, Ursin G, Tretli S, Sebuødegård S, Møller B. Breast cancer mortality in participants of the Norwegian Breast Cancer Screening Program. *Cancer*. 2013;119:3106-12. [PMID: 23720226] doi:10.1002/cncr.28174
62. Mook S, Van 't Veer LJ, Rutgers EJ, Ravdin PM, van de Velde AO, van Leeuwen FE, et al. Independent prognostic value of screen detection in invasive breast cancer. *J Natl Cancer Inst*. 2011;103:585-97. [PMID: 21350218] doi:10.1093/jnci/djr043
63. Coldman A, Phillips N, Wilson C, Decker K, Chiarelli AM, Brisson J, et al. Pan-Canadian study of mammography screening and mortality from breast cancer. *J Natl Cancer Inst*. 2014;106. [PMID: 25274578] doi:10.1093/jnci/dju261
64. Schonberg MA, Silliman RA, Marcantonio ER. Weighing the benefits and burdens of mammography screening among women age 80 years or older. *J Clin Oncol*. 2009;27:1774-80. [PMID: 19255318] doi:10.1200/JCO.2008.19.9877
65. Aron JL, Prorok PC. An analysis of the mortality effect in a breast cancer screening study. *Int J Epidemiol*. 1986;15:36-43. [PMID: 3957541]
66. Coldman AJ, Phillips N, Olivetto IA, Gordon P, Warren L, Kan L. Impact of changing from annual to biennial mammographic screening on breast cancer outcomes in women aged 50-79 in British Columbia. *J Med Screen*. 2008;15:182-7. [PMID: 19106258] doi:10.1258/jms.2008.008064
67. Parvonen I, Chiu S, Pylkkänen L, Klemi P, Immonen-Räihä P, Kauhava L, et al. Effects of annual vs triennial mammography interval on breast cancer incidence and mortality in ages 40-49 in Finland. *Br J Cancer*. 2011;105:1388-91. [PMID: 21934688] doi:10.1038/bjc.2011.372
68. Chu KC, Smart CR, Tarone RE. Analysis of breast cancer mortality and stage distribution by age for the Health Insurance Plan clinical trial. *J Natl Cancer Inst*. 1988;80:1125-32. [PMID: 3411625]
69. Duffy SW, Tabar L, Vitak B, Yen MF, Warwick J, Smith RA, et al. The Swedish Two-County Trial of mammographic screening: cluster randomisation and end point evaluation. *Ann Oncol*. 2003;14:1196-8. [PMID: 12881376]
70. Moss S, Thomas I, Evans A, Thomas B, Johns L; Trial Management Group. Randomised controlled trial of mammographic screening in women from age 40: results of screening in the first 10 years. *Br J Cancer*. 2005;92:949-54. [PMID: 15726102]
71. Edge S, Byrd DR, Compton C, Fritz AG, Greene FL, Trotti A. *AJCC Cancer Staging Manual*. 7th ed. New York: Springer Publishing; 2010.
72. Autier P, Héry C, Haukka J, Boniol M, Byrnes G. Advanced breast cancer and breast cancer mortality in randomized controlled trials on mammography screening. *J Clin Oncol*. 2009;27:5919-23. [PMID: 19884547] doi:10.1200/JCO.2009.22.7041
73. Buseman S, Mouchawar J, Calonge N, Byers T. Mammography screening matters for young women with breast carcinoma: evidence of downstaging among 42-49-year-old women with a history of previous mammography screening. *Cancer*. 2003;97:352-8. [PMID: 12518359]
74. García Fernández A, Chabrera C, García Font M, Fraile M, Lain JM, González S, et al. Mortality and recurrence patterns of breast cancer patients diagnosed under a screening programme versus comparable non-screened breast cancer patients from the same

- population: analytical survey from 2002 to 2012. *Tumour Biol.* 2014; 35:1945-53. [PMID: 24114015] doi:10.1007/s13277-013-1260-7
75. Jensen AR, Garne JP, Storm HH, Ewertz M, Cold S, Alvegaard T, et al. Stage and survival in breast cancer patients in screened and non-screened Danish and Swedish populations. *Acta Oncol.* 2003; 42:701-9. [PMID: 14690155]
76. Olivotto IA, Mates D, Kan L, Fung J, Samant R, Burhenne LJ. Prognosis, treatment, and recurrence of breast cancer for women attending or not attending the Screening Mammography Program of British Columbia. *Breast Cancer Res Treat.* 1999;54:73-81. [PMID: 10369083]
77. Olsson A, Garne JP, Tengrup I, Zackrisson S, Manjer J. Overweight in relation to tumour size and axillary lymph node involvement in postmenopausal breast cancer patients-differences between women invited to vs. not invited to mammography in a randomized screening trial. *Cancer Epidemiol.* 2009;33:9-15. [PMID: 19679041] doi:10.1016/j.canep.2009.04.008
78. Gøtzsche PC, Jørgensen KJ. Screening for breast cancer with mammography. *Cochrane Database Syst Rev.* 2013;6:CD001877. [PMID: 23737396] doi:10.1002/14651858.CD001877.pub5
79. Dittus K, Geller B, Weaver DL, Kerlikowske K, Zhu W, Hubbard R, et al; Breast Cancer Surveillance Consortium. Impact of mammography screening interval on breast cancer diagnosis by menopausal status and BMI. *J Gen Intern Med.* 2013;28:1454-62. [PMID: 23760741] doi:10.1007/s11606-013-2507-0
80. Goel A, Littenberg B, Burack RC. The association between the pre-diagnosis mammography screening interval and advanced breast cancer. *Breast Cancer Res Treat.* 2007;102:339-45. [PMID: 16927175]
81. Hubbard RA, Kerlikowske K, Flowers CI, Yankaskas BC, Zhu W, Miglioretti DL. Cumulative probability of false-positive recall or biopsy recommendation after 10 years of screening mammography: a cohort study. *Ann Intern Med.* 2011;155:481-92. [PMID: 22007042] doi:10.7326/0003-4819-155-8-201110180-00004
82. Kerlikowske K, Zhu W, Hubbard RA, Geller B, Dittus K, Braithwaite D, et al; Breast Cancer Surveillance Consortium. Outcomes of screening mammography by frequency, breast density, and postmenopausal hormone therapy. *JAMA Intern Med.* 2013;173:807-16. [PMID: 23552817] doi:10.1001/jamainternmed.2013.307
83. White E, Miglioretti DL, Yankaskas BC, Geller BM, Rosenberg RD, Kerlikowske K, et al. Biennial versus annual mammography and the risk of late-stage breast cancer. *J Natl Cancer Inst.* 2004;96:1832-9. [PMID: 15601639]
84. Breast Screening Frequency Trial Group. The frequency of breast cancer screening: results from the UKCCCR Randomised Trial. United Kingdom Co-ordinating Committee on Cancer Research. *Eur J Cancer.* 2002;38:1458-64. [PMID: 12110490]
85. Skaane P, Bandos AI, Gullien R, Eben EB, Ekseth U, Haakenaasen U, et al. Comparison of digital mammography alone and digital mammography plus tomosynthesis in a population-based screening program. *Radiology.* 2013;267:47-56. [PMID: 23297332] doi:10.1148/radiol.12121373
86. Rose SL, Tidwell AL, Bujnoch LJ, Kushwaha AC, Nordmann AS, Sexton R Jr. Implementation of breast tomosynthesis in a routine screening practice: an observational study. *AJR Am J Roentgenol.* 2013;200:1401-8. [PMID: 23701081] doi:10.2214/AJR.12.9672
87. Bleyer A, Welch HG. Effect of three decades of screening mammography on breast-cancer incidence. *N Engl J Med.* 2012;367:1998-2005. [PMID: 23171096] doi:10.1056/NEJMoa1206809
88. Lousdal ML, Kristiansen IS, Møller B, Støvring H. Trends in breast cancer stage distribution before, during and after introduction of a screening programme in Norway. *Eur J Public Health.* 2014;24:1017-22. [PMID: 24596400] doi:10.1093/eurpub/cku015
89. Autier P, Boniol M, Middleton R, Doré JF, Héry C, Zheng T, et al. Advanced breast cancer incidence following population-based mammographic screening. *Ann Oncol.* 2011;22:1726-35. [PMID: 21252058] doi:10.1093/annonc/mdq633

**Current Author Addresses:** Drs. Nelson, Fu, Cantor, and Humphrey; Ms. Pappas; and Ms. Daeges: Oregon Health & Science University, 3181 SW Sam Jackson Park Road, Mail Code BICC, Portland, OR 97239.

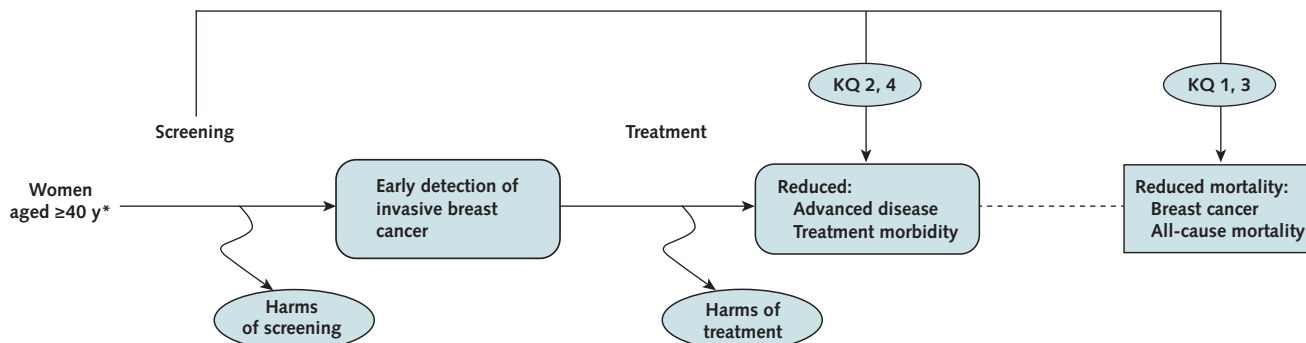
**Author Contributions:** Conception and design: H.D. Nelson, A. Cantor, L. Humphrey.  
 Analysis and interpretation of the data: H.D. Nelson, R. Fu, A. Cantor, M. Pappas, M. Daeges, L. Humphrey.  
 Drafting of the article: H.D. Nelson, R. Fu, A. Cantor, M. Pappas, L. Humphrey.  
 Critical revision of the article for important intellectual content: H.D. Nelson, R. Fu, A. Cantor, L. Humphrey.  
 Final approval of the article: H.D. Nelson, R. Fu, A. Cantor, M. Pappas.  
 Provision of study materials or patients: H.D. Nelson, M. Daeges.  
 Statistical expertise: H.D. Nelson, R. Fu, A. Cantor.  
 Obtaining of funding: H.D. Nelson.  
 Administrative, technical, or logistic support: H.D. Nelson, M. Pappas, M. Daeges.  
 Collection and assembly of data: H.D. Nelson, R. Fu, A. Cantor, M. Pappas, M. Daeges, L. Humphrey.

## Web-Only References

90. Shapiro S, Venet W, Strax P, Venet L. Current results of the breast cancer screening randomized trial: the Health Insurance Plan (HIP) of

Greater New York study. In: Day N, Miller A, eds. Screening for Breast Cancer. Toronto, Ontario, Canada: Hans Huber; 1988:3-15.  
 91. Bjurstam N, Björneld L, Duffy SW, Smith TC, Cahlin E, Eriksson O, et al. The Gothenburg Breast Cancer Screening Trial: preliminary results on breast cancer mortality for women aged 39-49. *J Natl Cancer Inst Monogr.* 1997;53-5. [PMID: 9709276]  
 92. Bjurstam N, Björneld L, Duffy SW, Smith TC, Cahlin E, Eriksson O, et al. The Gothenburg breast screening trial: first results on mortality, incidence, and mode of detection for women ages 39-49 years at randomization. *Cancer.* 1997;80:2091-9. [PMID: 9392331]  
 93. Frisell J, Eklund G, Hellström L, Lidbrink E, Rutqvist LE, Somell A. Randomized study of mammography screening—preliminary report on mortality in the Stockholm trial. *Breast Cancer Res Treat.* 1991;18:49-56. [PMID: 1854979]  
 94. Andersson I, Janzon L. Reduced breast cancer mortality in women under age 50: updated results from the Malmö Mammographic Screening Program. *J Natl Cancer Inst Monogr.* 1997;63-7. [PMID: 9709278]  
 95. Andersson I, Janzon L, Sigfússon BF. Mammographic breast cancer screening—a randomized trial in Malmö, Sweden. *Maturitas.* 1985;7:21-9. [PMID: 2991708]  
 96. Tabár L, Chen HH, Fagerberg G, Duffy SW, Smith TC. Recent results from the Swedish Two-County Trial: the effects of age, histologic type, and mode of detection on the efficacy of breast cancer screening. *J Natl Cancer Inst Monogr.* 1997;43-7. [PMID: 9709274]  
 97. Tabár L, Vitak B, Chen HH, Duffy SW, Yen MF, Chiang CF, et al. The Swedish Two-County Trial twenty years later. Updated mortality results and new insights from long-term follow-up. *Radiol Clin North Am.* 2000;38:625-51. [PMID: 10943268]

**Appendix Figure 1.** Analytic framework and key questions.



### Key questions:

For women aged ≥40 years older\*:

1. What is the effectiveness of routine mammography screening in reducing breast cancer-specific and all-cause mortality, and how does it differ by age, risk factor, and screening interval?
2. What is the effectiveness of routine mammography screening in reducing the incidence of advanced breast cancer and treatment-related morbidity†, and how does it differ by age, risk factor, and screening interval?
3. How does the effectiveness of routine breast cancer screening in reducing breast cancer-specific and all-cause mortality vary by different screening modality‡?
4. How does the effectiveness of routine breast cancer screening in reducing the incidence of advanced breast cancer and treatment-related morbidity‡ vary by different screening modality‡?

KQ = key question.

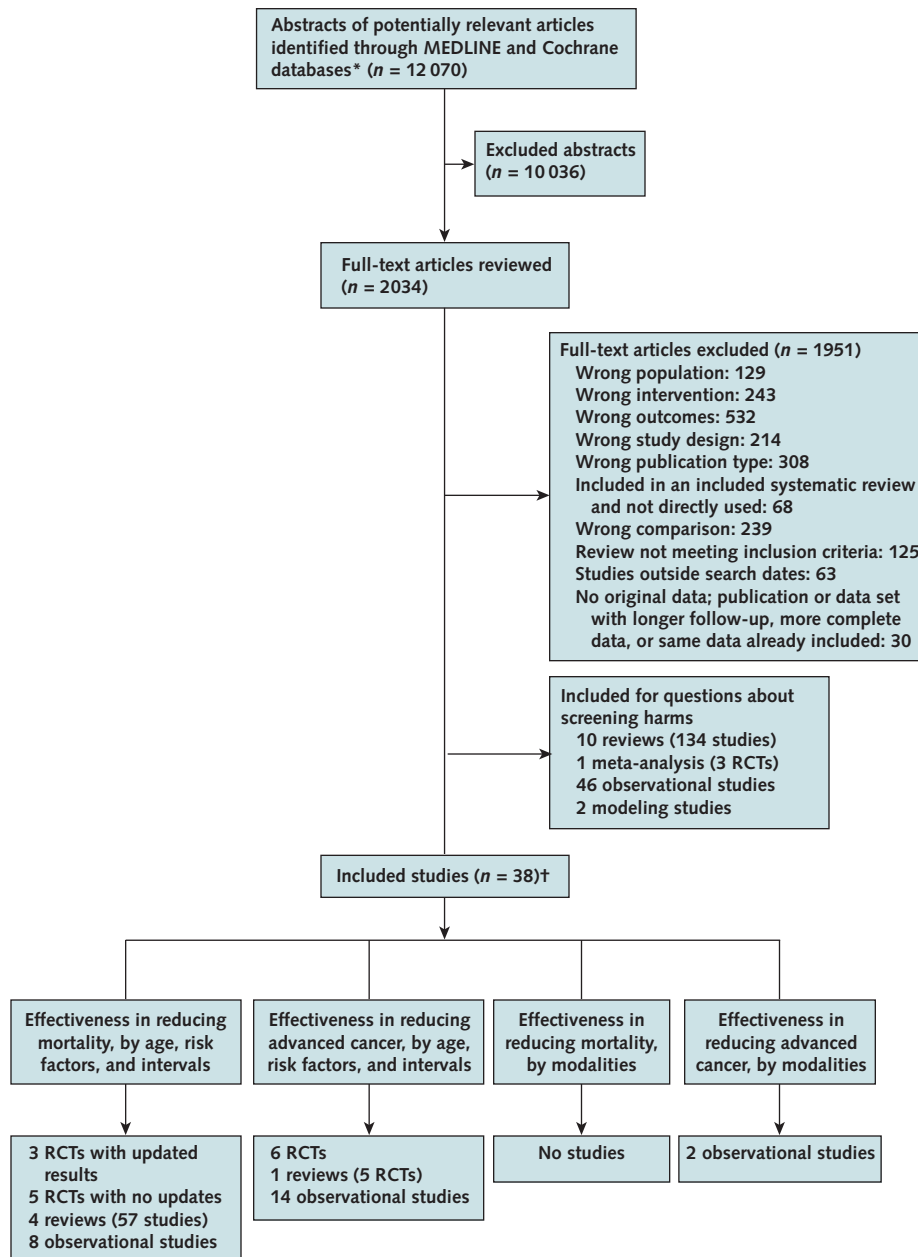
\* Excludes women with preexisting breast cancer; clinically significant *BRCA1* or *BRCA2* mutations, Li-Fraumeni syndrome, Cowden syndrome, hereditary diffuse gastric cancer, or other familial breast cancer syndromes; high-risk lesions (ductal carcinoma in situ, lobular carcinoma in situ, atypical ductal hyperplasia, atypical lobular hyperplasia); or previous large doses of chest radiation (≥20 Gy) before age 30 y.

† Risk factors include family history; breast density; race/ethnicity; menopausal status; current use of menopausal hormone therapy or oral contraceptives; prior benign breast biopsy; and, for women aged >50 y, body mass index.

‡ Morbidity includes physical adverse effects of treatment, quality-of-life measures, and other measures of impairment.

§ Screening modalities include mammography (film, digital, tomosynthesis), magnetic resonance imaging, ultrasonography, and clinical breast examination (alone or in combination).

Appendix Figure 2. Summary of evidence search and selection.



RCT = randomized, controlled trial.

\* Cochrane Central Register of Controlled Trials and Cochrane Database of Systematic Reviews.

† Publications may have been used for multiple key questions.

Appendix Table 1. Mammography Screening Trials

Author (Reference)	Year Trial Began	Setting and Population	Screening Group; Control Group, n*	Method of Randomization	Comparison Groups	Screening Characteristics		Study Duration, y	Longest Follow-up, y	USPSTF Quality Rating and Limitations		
						Interval, mo	Views, n				Adherence, %	
HIP (29, 65, 68, 90)	1963	New York health plan members aged 40-64 y	30 239; 30 765	Age- and family size-stratified pairs of women were individually randomized by drawing from a list	Mammography + CBE vs. UC	12	4	2	46	4	18	Fair††§
CNBSS-1 and CNBSS-2 (15, 19, 21)	1980	Self-selected participants from 15 centers in Canada aged 40-49 y (CNBSS-1) and 50-59 y (CNBSS-2)	CNBSS-1: 25 214; 25 216 CNBSS-2: 19 711; 19 694	Individual within blocks stratified by center and 5-year age group after CBE	Mammography + CBE vs. UC (all women prescreened with CBE and instructed in BSE); women 50-59 UC involved annual CBE; all age ≥50 offered screening after trial completed	12	4-5	2	85	4.5	25	Fair†
Gothenburg (25, 91, 92)	1982	All women aged 39-59 y born between 1923 and 1944 living in Gothenburg, Sweden	21 650; 29 961	Cluster, based on day of birth for 1923-1935 cohort (18%) by individual for 1936-1944 cohort (82%)	Mammography vs. UC; controls offered screening after 5 y trial completed after approximately 7 y	18	5	1-2	75	9	12	Fair††¶
Stockholm (23, 93)	1981	Residents aged 40-64 y from southeast greater Stockholm, Sweden	40 318; 19 943	Individual, by day of month; ratio of screening to control group 2:1	Mammography vs. UC; controls screened after 5 y	24-28	2	1	81	4.8	11.4	Fair†
MMST I and MMST II (24, 94, 95)	1976-1978	All women aged 43-69 y born between 1908 and 1945 living in Malmö, Sweden	MMST I: 21 088; 21 195 MMST II: 9581; 8212	Individual, within birth year	Mammography vs. UC; controls offered screening after year 14	18-24	9	1-2	70	≥10	11-13; 15.5	Fair††¶
Swedish Two-County Trial (26, 96, 97)	1977	Women aged 40-70 y from Östergötland and Kopparberg counties in Sweden	77 080; 55 985	Clusters, based on geographic units; blocks designed to be demographically homogeneous	Mammography vs. UC; controls offered screening after year 7	24-33	3	1	84	7	20; 15.5	Fair†
Age (22, 27)	1991	Women aged 39-41 y from 23 National Health Service breast screening units in England, Scotland, and Wales	53 884; 106 956	Individual, stratified by general practitioner group with random number generation 1991-1992; 1992 onward, randomization via Health Authority computer system	Mammography vs. UC; all women offered screening at age 50-52 y	12	4-6, varied by center	2	57	9	17.5	Fair†¶

BSE = breast self-examination; CBE = clinical breast examination; CNBSS = Canadian National Breast Screening Study; HIP = Health Insurance Plan of New York; MMST = Malmö Mammographic Screening Trial; UC = usual care; USPSTF = U.S. Preventive Services Task Force.

\* Numbers of participants in screening and control groups vary by publication.

† Generally effective randomization and comparable groups are assembled initially, but some question remains whether some, although not major, differences occurred in follow-up.

‡ Important differential loss to follow-up or overall high loss to follow-up; adherence <80%.

§ Numbers of participants unclear.

¶ New data since prior recommendation.

¶¶ Did not maintain comparable groups (includes attrition, crossovers, adherence, contamination).

**Appendix Table 2. Observational Studies of Screening and Mortality Not Included in Systematic Reviews**

Author, Year (Reference)	Design	Setting	Study Years	Participants, n	Age, y	Participation Rate	Comparison	Adjusted for Previous Breast Cancer	Reduction in Breast Cancer Mortality	Reduction in All-Cause Mortality	Quality Rating and Limitations
Goldman et al, 2008 (66)	Time-trend	British Columbia, Canada: 4 cohorts based on date and age at first screening	1988-2005	658 151	40-79	70%	Change from annual to biennial in 1997 for age 50-79 y	NR	Breast cancer deaths (MR pre vs. post) 40-49 y: 0.67 (95% CI, 0.33-1.37) ≥50 y: 1.06 (CI 0.76-1.46)	NR	NA
Goldman et al, 2014 (65)	Incidence-based mortality	Canadian Screening Programs	1990-2009	2 796 472	40-79	85% of Canadians	Women participating in screening vs. not participating	NR	Breast cancer deaths (SMR) 40-49 y: 0.56 (CI, 0.45-0.67) 50-59 y: 0.60 (CI, 0.49-0.71) 60-69 y: 0.58 (CI, 0.50-0.67) 70-79 y: 0.65 (CI, 0.56-0.74)	NR	NA
Hellquist et al, 2011 (59)	Prospective cohort	Swedish counties in Mammography Screening of Young Women cohort	1986-2005	620 620	40-49	80%-90%	Invited vs. not invited to screen	Yes	Breast cancer deaths (person-years), invited vs. not Adjusted for invitation: 619 vs. 1205; RR, 0.74 (CI, 0.66-0.83) Adjusted for attendance: 523 vs. 1205; RR, 0.71 (CI, 0.62-0.80) NNS during a 10-y period to save 1 life: 1252 (CI, 958-1915)	NR	Fair*
Hofvind and Skane, 2012 (60)	Time-trend	Norwegian Breast Cancer Screening Program	1984-1995 and 1996-2007	10 478 cancer cases	55-75	NA	Prescreening (1984-1995) vs. biennial screening (1996-2007)	Unclear	Breast cancer deaths (age-standardized breast cancer mortality rate) Pre: 20/100 000 Post: 14/100 000	Age-standardized mortality rate Pre: 48/100 000 to 80/100 000 Post: 51/100 000	NA
Hofvind et al, 2013 (61)	Prospective cohort	Norwegian Breast Cancer Screening Program	1996-2010	699 628	50-69	84%	Screened vs. not screened	Unclear	Breast cancer deaths (women-years), nonscreened vs. screened Number of deaths: 392/2055 vs. 998/13 162 Adjusted breast cancer mortality: 1.00 vs. 0.39 (CI, 0.35-0.44) Adjusted for self-selection bias: 1.00 vs. 0.57 (CI, 0.51-0.64)	NR	Fair*
Mook et al, 2011 (62)	Retrospective cohort	The Netherlands	1990-2000	2592	50-69	70%-80%	Screened vs. not screened	Yes	Breast cancer mortality (HR) screen-detected vs. not screen-detected Univariate HR: 0.43 (CI, 0.34-0.53); P < 0.001 Multivariate HR: 0.66 (CI, 0.50-0.86); P = 0.002 Absolute reduction in breast cancer mortality at 10 y of follow-up: 7%	All-cause mortality (HR) Univariate HR: 0.60 (CI, 0.51-0.69); P < 0.001 Multivariate HR: 0.77 (CI, 0.64-0.92); P = 0.005	Poor*
Panvinen et al, 2011 (67)	Retrospective cohort	Finland, national screening program registry data	1987-2003	14 765	40-49	85%	Annual vs. triennial screening	No	Breast cancer mortality (per 100 000 person-years) Triennial: 17.9; RR (reference) Annual: 20.3; RR, 1.14 (CI, 0.59-1.27)	All-cause mortality (per 100 000 person-years) Triennial: 192.6; RR (reference) Annual: 230.9; RR, 1.20 (CI, 0.99-1.46)	Fair††
Schonberg et al, 2009 (64)	Retrospective cohort	Medical record review at community health centers in the United States	1994-2004	2011	>80	NA	Screened vs. not screened	Yes	Breast cancer deaths: 1 vs. 2	All-cause deaths: 12 vs. 12	Fair

HR = hazard ratio; MR = mortality ratio; NA = not applicable (quality rating criteria unavailable for this study design); NNS = number needed to screen; NR = not reported; RR = relative risk; SMR = standardized mortality ratio.  
 \* Did not maintain comparable groups (includes attrition, crossovers, adherence, contamination).  
 † Statistical limitations, including low power to detect differences.  
 †† Fair



**Appendix Table 3.** Advanced Breast Cancer Outcomes Reported in Screening Trials

Study, Year (Reference)	Stage	Positive Lymph Nodes, n*	Size, mm†	Definition of Advanced Cancer‡	RR for Advanced Cancer (95% CI)§
HIP, 1988 (68)	I, II, III, IV	NR	NR	Stage III-IV	40-49 y: 0.87 (0.48-1.58) 50-64 y: 0.52 (0.31-0.88)
CNBSS-1, 1992 (18) and 2002 (19)	NR	0, 1-3, ≥4	1-9, 10-14, 15-19, 20-39, ≥40	Size ≥40 mm; ≥4 lymph nodes	40-49 y: 1.18 (0.67-2.03) 40-49 y: 2.00 (1.20-3.34)
CNBSS-2, 1992 (20) and 2002 (21)	NR	0, 1-3, ≥4	1-9, 10-14, 15-19, 20-39, ≥40	Size ≥40 mm; ≥4 lymph nodes	50-59 y: 0.75 (0.38-1.46) 50-59 y: 0.91 (0.55-1.49)
Stockholm, 1997 (23)	0, I, II, III-IV	NR	NR	Stage III or greater	40-64 y: 1.15 (0.59-2.07)
MMST, 1988 (24)	0, I, II, III-IV, II-IV	NR	NR	Stage III or greater	45-70 y: 0.82 (0.56-1.20)
Swedish Two-County Trial, 1995 (26) and 2003 (69)	I, II, III-IV	0, ≥1	1-9, 10-14, 15-19, 20-29, 30-49, ≥50	Size ≥50 mm	40-49 y: 1.57 (0.63-3.94) 50-74 y: 0.63 (0.45-0.82)
Age, 2005 (70)	NR	0, 1-3, ≥4	1-9, 10-14, 15-19, 20-29, 30-49, ≥50	Size ≥50 mm; ≥4 lymph nodes	39-49 y: 0.85 (0.57-1.23) 39-49 y: 0.77 (0.53-1.13)

CNBSS = Canadian National Breast Screening Study; HIP = Health Insurance Plan of Greater New York; MMST = Malmö Mammographic Screening Trial; NR = not reported; RR = relative risk.

\* Lymph nodes with micrometastases are classified as stage IB, otherwise ≥1 positive lymph node is classified as stage IIA or higher.

† Size ≥20 mm is classified as stage IIA or higher; size ≥50 mm is classified as stage IIB or higher.

‡ Represents the highest category of disease reported by the trials.

§ Screening vs. control. Only trials reporting results by age (<50 y; ≥50 y) were included in the meta-analysis.

**Appendix Table 4. Studies of Advanced Cancer Outcomes With Mammography Screening**

Author, Year (Reference)	Design	Setting	Study Years	Participants, n	Age, y	Comparison	Outcome Measures	Results
Breast Screening Frequency Trial Group, 2002 (84)	RCT	United Kingdom: 5 screening units in NHS Breast Screening Programme	1989–1996	76 022	50–62	Annual screening vs. no screening for 3 y after initial screen	Size >20 mm; $\geq 1$ positive node	Invasive: 235 vs. 208 Tumor size >20 mm: 27% (63/233) vs. 34% (69/203); $P < 0.05$ $\geq 1$ node positive: 34% (63/185) vs. 37% (61/166); $P = 0.50$
Buseman et al, 2003 (73)	Case series	United States: Kaiser Permanente	1994–2000	247	42–49	Screened vs. not screened	Stage II–IV; III or IV	Stage II–IV: 39% (41/105) vs. 52% (74/142); $P = 0.06$ Stage III or IV: 4% (n = NR) vs. 9% (n = NR); $P = NR$
Dittus et al, 2013 (79)	Case series	United States: BCSC data, multisite	1996–2008	4432	40–74	1-y vs. 2-y screening intervals	Stage; size >20 mm; node-positive	No statistically significant differences for stage, size, lymph node positive by weight status
García Fernández et al, 2014 (74)	Case series	Spain: breast cancer program and regular public health system	2002–2012	904	50–69	Screened vs. not screened	Node-positive; $\geq 3$ nodes positive; size >20 mm	Cancer detection rate: 3.8/1000 (475/123 445) vs. 9.4/1000 (382/40 797) Invasive: 80% (419/523) vs. 92% (373/403); $P < 0.001$ Lymph node positive: 75% (312/419) vs. 57% (204/373); $P < 0.001$ $\geq 3$ nodes positive: 28% (28/103) vs. 42% (66/156); $P < 0.001$ Tumor size >20 mm: 16.5% (69/419) vs. 48.5% (181/373); $P < 0.001$
Goel et al, 2007 (80)	Case series	United States: Vermont Breast Cancer Surveillance System	1994–2002	1944	>40	1-y vs. 2-y screening intervals	Advanced: either stage IIb or greater; size >20 mm; >1 positive node	Advanced: 21% vs. 24%; $P = 0.262$ No statistically significant differences by age
Hubbard et al, 2011 (81)	Case series	United States: BCSC data, multisite	1996–2006	4492	40–59	1-y vs. 2-y screening intervals	Stage IIb or greater	Adjusted proportion of cancer stage for 2-year vs. 1-year intervals
Jensen et al, 2003 (75)	Case series	Denmark and Sweden	1996–1997	2104	50–69	Regions with mammography screening vs. regions without	Stage III or IV; median size	Stage III or IV for 40–49 y: 4.8 (95% CI, 1.3–8.4) No statistically significant differences for other stages Stage III or IV: 8.8% (81/917) vs. 13.6% (162/1187); $P < 0.001$ Median tumor size (mm): 18 (Malmö) and 17 (Fünten) vs. 20 (Aarhus and Northern Jutland); $P < 0.001$
Kerlikowski et al, 2013 (82)	Case series	United States: BCSC data, multisite	1996–2008	11 474	40–74	1-y vs. 2-y vs. 3-y screening intervals	Stage IIb–IV	Adjusted OR for 2-year vs. 1-year intervals Stages IIb–IV in 40–49 y + extreme breast density: 1.89 (CI, 1.06–3.39) Tumor size >20 mm in 40–49 y + extreme breast density: 2.39 (CI, 1.37–4.18) No statistically significant differences for 50–74 y, 40–49 y without extreme density, or for any comparisons between 3-y vs. 2-y intervals
Olivotto et al, 1999 (76)	Case series	Canada: Screening Mammography Program of British Columbia	1989–1996	13 636	40–89	Screening attenders vs. nonattenders	Stage III or IV; size >20 mm	Invasive: 88% (1712/1946) vs. 92.3% (7523/8149); $P < 0.001$ Stage III or IV: 4.3% (84/1946) vs. 11.9% (969/8149); $P < 0.001$ Tumor size >20 mm: 24.1% (3413/1946) vs. 38.3% (2885/8149); $P < 0.001$
Olsson et al, 2009 (77)	Case series	Sweden: MMST	1961–1991	2478	45–69	Invited to screen vs. not invited	Size >20 mm; node positive	Tumor size >20 mm: 23% vs. 36%; $P < 0.05$ Lymph node positive: 28% vs. 36%; $P < 0.05$
White et al, 2004 (83)	Case series	United States: BCSC data, multisite	1996–2001	7840	40–89	1-y vs. 2-y screening intervals	Stage III or IV; size >20 mm	Stage III or IV: 3% vs. 4% Tumor size >20 mm: 22% vs. 24% OR (for 2-y interval vs. 1-y interval) Late stage for invasive cancers only: 0.97 (CI, 0.84–1.13) Tumor size >20 mm for invasive: 1.07 (CI, 0.92–1.24)

BCSC = Breast Cancer Surveillance Consortium; HIP = Health Insurance Plan of New York; MMST = Malmö Mammographic Screening Trial; NHS = National Health Service; NR = not reported; NS = not significant; OR = odds ratio; RCT = randomized, controlled trial.

**Appendix Table 5. Observational Studies of Breast Cancer Treatment for Screened and Nonscreened Women**

Author, Year (Reference)	Design	Setting	Study Years	Participants, n	Age, y	Comparison	Results
Buseman et al, 2003 (73)	Case series	United States: Kaiser Permanente	1994-2000	247	42-49	Screened vs. not screened	Lumpectomy + radiation treatment: 61% (64/105) vs. 57% (81/142); RR, 1.00 (95% CI, 0.75-1.33) Chemotherapy: 55% (58/105) vs. 61% (86/142); RR, 1.06 (CI, 0.85-1.33)
García Fernández et al, 2014 (74)	Case series	Spain: breast cancer program and public health system	2002-2012	904	50-69	Screened vs. not screened; includes DCIS (20% vs. 8%; $P < 0.001$ )	Primary treatment: Overall differences, $P < 0.001$ Conservative surgery: 83% (433/523) vs. 57% (230/403) Radical surgery: 16% (84/523) vs. 41% (163/403) Chemotherapy: 0.4% (2/510) vs. 0.8% (3/394) Sentinel node biopsy: 73% (384/523) vs. 50% (200/403); $P < 0.001$ Adjuvant treatment: Overall differences, $P < 0.001$ Chemotherapy: 41% (211/510) vs. 72% (284/394) Hormone therapy: 86% (439/510) vs. 80% (317/394) Radiotherapy: 87% (444/510) vs. 75% (296/393)
Jensen et al, 2003 (75)	Case series	Denmark and Sweden	1996-1997	2104	50-69	Regions with mammography screening vs. regions without	Overall differences, $P < 0.001$ Mastectomy: 61% (556/917) vs. 85% (893/1051) Lumpectomy: 32% (295/917) vs. 6.8% (72/1051) Biopsy only: 6.4% (59/917) vs. 8% (84/1051)
Olivotto et al, 1999 (76)	Case series	Canada: Screening Mammography Program of British Columbia	1989-1996	13 636	40-89	Attenders vs. nonattenders; includes DCIS (12% vs. 8%; $P < 0.001$ )	Definitive breast surgery: Overall differences, $P < 0.001$ Total mastectomy: 35% (603/1712) vs. 46% (3452/7523) (1109/1712) vs. 54% (4071/7523) Adjuvant systemic therapy: Overall differences, $P < 0.001$ Tamoxifen alone: 29% (493/1712) vs. 36% (2694/7523) Chemotherapy: 23% (392/1712) vs. 27% (2060/7523), $P < 0.001$

DCIS = ductal carcinoma in situ; OR = odds ratio; RR = relative risk.

**Appendix Table 6.** Observational Studies of Advanced Cancer Outcomes With Mammography Plus Tomosynthesis

Author, Year (Reference)	Design	Setting	Study Years	Participants, n	Age, y	Comparison	Outcome Measures/ Definitions	Results
Rose et al, 2013 (86)	Case series	United States: multisite community-based breast center	2011-2012	DM: 18 202 DM + T: 10 878	>18	DM vs. DM + T	Cancer detection rate; positive nodes	Cancer detection rate: 4.0 vs. 5.4/1000; NS Positive nodes: 4 vs. 6; <i>P</i> = 0.84
Skaane et al, 2013 (85)	Postintervention series	Norway: Oslo screening program	2010-2011	12 631	50-69	DM vs. DM + T (biennial screening)	Cancer detection rate; positive nodes; size ≥20 mm	Cancer detection rate: 6.1/1000 vs. 8.0/1000; <i>P</i> = 0.001 Positive nodes: 9 vs. 13; NS Size ≥20 mm: 12 vs. 15; NS

DM = digital mammography; NS = not statistically significant; T = tomosynthesis.